

# HOSE & FITTINGS

March 2023



# GLOBAL SYSTEM

B&H Global System brake hoses are designed to be as adaptable as possible, making it easy and affordable to fit out almost any bike with high quality brake lines.

The back bone of the system is a stainless steel braided hose with a protective sheath and female threaded sockets permanently crimped onto each end. To complete the system, there is a wide range of banjos and fittings that screw directly onto the hoses. Simply work out the fittings you need at each end, and select the length of hose you need to create a complete brake line for your bike.

Available in either silver or black, the look will compliment any bike and the performance is second to none.

This system is 100% compliant with New Zealand Land Transport W.O.F. regulations.

Note: standard fittings can be used with the Global System hose by removing the nut and olive - this will meet W.O.F requirements

# STANDARD HOSE AND FITTINGS

B&H brake hoses and fittings are made to the strictest quality specifications by Italy's premier automotive hose and fitting manufacturer.

A P.T.F.E. hose core is reinforced with AISI 304 Stainless steel braid and covered with a clear PVC protective sheath. A nut and olive fitting system is used to attach a wide range of high quality end fittings to the hose, meaning almost any imaginable hose configuration can be built up quickly and safely. Simply work out the fittings you need at each end and specify the length of hose you need to create a complete brake line for your bike. With fittings available in either plated bronze or anodised aluminium, the look will compliment any bike and the performance is second to none.

Note: This system is intended for off-road and race use only. It is not compliant with New Zealand Land Transport regulations for Warrant Of Fitness. For W.O.F. compliant brake hoses, please use the B&H Global System range.

# GLOBAL SYSTEM

## GLOBAL SYSTEM HOSE

| Silver      | Black       |
|-------------|-------------|
| BH GS___TWM | BH GS___NWM |

BH 3694 Rubber seal for hose



## BANJO - Straight

| Ø    | Silver    | Black      | Alu         |
|------|-----------|------------|-------------|
| 6    |           |            | BH 5708 red |
| 10.1 | BH GSF326 | BH GSF5393 |             |
| 11.1 | BH GSF264 | BH GSF5394 |             |



## BANJO - 15°

| Ø    | Silver     |
|------|------------|
| 10.1 | BH GSF8511 |

## BANJO - 25°

| Ø    | Silver    | Black      |
|------|-----------|------------|
| 10.1 | BH GSF350 | BH GSF5396 |



## BANJO - 35°

| Ø    | Silver     | Black |
|------|------------|-------|
| 10.1 | BH GSF8099 |       |



## BANJO - 45°

| Ø    | Silver    | Black      |
|------|-----------|------------|
| 10.1 | BH GSF314 | BH GSF5397 |
| 11.1 |           | BH GSF5398 |



## BANJO - 60°

| Ø    | Silver    | Black      |
|------|-----------|------------|
| 10.1 | BH GSF339 | BH GSF5399 |



## BANJO - 90°

| Ø    | Silver    | Black      |
|------|-----------|------------|
| 10.1 | BH GSF325 | BH GSF5400 |
| 11.1 |           | BH GSF5401 |



## BANJO SIDE BEND - 15°

| Ø    | Silver     |
|------|------------|
| 10.1 | BH GSF8512 |

## BANJO SIDE BEND - 25°

| Ø    | Silver    | Black      |
|------|-----------|------------|
| 10.1 | BH GSF773 | BH GSF5404 |



## BANJO SIDE BEND - 90°

| Ø    | Silver     |
|------|------------|
| 10.1 | BH GSF3780 |
|      |            |



## BANJO SIDE BEND LONG - 90°

| Ø    | Silver     |
|------|------------|
| 10.1 | BH GSF6482 |



## BANJO - Short

| Ø    | Silver    | Black      | Alu         |
|------|-----------|------------|-------------|
| 6    |           |            | BH 5914 red |
| 10.1 | BH GSF128 | BH GSF5402 |             |



## BANJO - Twin Outlet

| Ø    | Silver   |
|------|----------|
| 10.1 | BH GSF78 |



## TEE FITTING

| Steel      | Alu       | Black      |
|------------|-----------|------------|
| BH GSF4300 | BH GSF692 | BH GSF5432 |



## HOSE TO HOSE JOINER

| Silver     |
|------------|
| BH GSF3725 |



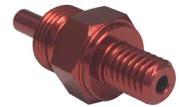
## 3 WAY JUNCTION WITH 6 mm BOLT HOLE

| Silver     |
|------------|
| BH GSF6705 |



## FIXED STRAIGHT MALE

| Ø        | Alu (red) |
|----------|-----------|
| 6 x 1    | BH 6274   |
| 8 x 0.75 | BH 5791   |
| 8 x 1    | BH 6275   |



## BULKHEAD FIXED CONCAVE SEAT MALE

| Ø             | Silver     |
|---------------|------------|
| 3/8" x 24 unf | BH GSF3719 |
| 10 x 1        | BH GSF3718 |
| 10 x 1.25     | BH GSF3720 |



## FIXED CONCAVE SEAT MALE

| Ø             | Silver     | Black      |
|---------------|------------|------------|
| 10 x 1        | BH GSF3714 | BH GSF5409 |
| 10 x 1.25     | BH GSF3715 | BH GSF5410 |
| 3/8" x 24 unf | BH GSF3721 | BH GSF5411 |



## FIXED CONCAVE SEAT FEMALE

| Ø         | Silver     |
|-----------|------------|
| 10 x 1    | BH GSF3713 |
| 10 x 1.25 | BH GSF3716 |



## FIXED CONCAVE SEAT FEMALE (clip fixing)

| Ø             | Silver     |
|---------------|------------|
| 10 x 1        | BH GSF333  |
| 10 x 1.25     | BH GSF3717 |
| 3/8" x 24 unf | BH GSF3712 |



## SWIVEL MALE - Straight

| Ø         | Silver     | Black      |
|-----------|------------|------------|
| 10 x 1    | BH GSF3700 | BH GSF5412 |
| 10 x 1.25 | BH GSF3701 | BH GSF5413 |



## SWIVEL MALE - 45°

| Ø         | Silver     | Black      |
|-----------|------------|------------|
| 10 x 1    | BH GSF3702 | BH GSF5414 |
| 10 x 1.25 | BH GSF3703 | BH GSF5415 |



## SWIVEL MALE - 90°

| Ø         | Silver     | Black      |
|-----------|------------|------------|
| 10 x 1    | BH GSF3704 | BH GSF5416 |
| 10 x 1.25 | BH GSF3705 | BH GSF5417 |



## SWIVEL FEMALE - Straight

| Ø             | Silver     | Black      |
|---------------|------------|------------|
| 3/8" x 24 unf | BH GSF3707 | BH GSF5426 |



## SWIVEL FEMALE - 45°

| Ø             | Silver     | Black      |
|---------------|------------|------------|
| 3/8" x 24 unf | BH GSF3709 | BH GSF5427 |



## SWIVEL FEMALE - 90°

| Ø             | Silver     | Black      |
|---------------|------------|------------|
| 3/8" x 24 unf | BH GSF3711 | BH GSF5428 |

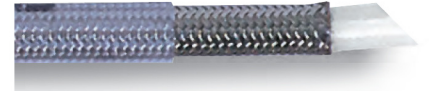




# STANDARD HOSE AND FITTINGS

## HOSE

| Silver  |   |
|---------|---|
| BH 2173 | 1/8" brake hose with 304 stainless steel wire braid and transparent sheathing |



## BANJO - Straight

| Ø    | Silver  | Alu         |
|------|---------|-------------|
| 8.1  | BH 4484 |             |
| 10.1 | BH 317  | BH 297 blue |
| 11.1 | BH 312  |             |
| 12.1 | BH 4455 |             |



## BANJO - 25°

| Ø    | Silver | Alu         |
|------|--------|-------------|
| 10.1 | BH 352 | BH 436 blue |



## BANJO - 45°

| Ø    | Silver  | Alu         |
|------|---------|-------------|
| 10.1 | BH 368  | BH 485 blue |
| 11.1 | BH 4055 |             |



## BANJO - 60°

| Ø    | Silver | Alu         |
|------|--------|-------------|
| 10.1 | BH 369 | BH 519 blue |



## BANJO - 90°

| Ø    | Silver  | Alu         |
|------|---------|-------------|
| 10.1 | BH 417  | BH 437 blue |
| 11.1 | BH 4056 |             |



## BANJO SIDE BEND- 25°

| Ø    | Silver | Alu         |
|------|--------|-------------|
| 10.1 | BH 794 | BH 517 blue |



## BANJO - Short

| Ø    | Silver  | Alu          |
|------|---------|--------------|
| 10.1 | BH 1203 | BH 1216 blue |
| 12.1 | BH 4433 |              |



## BANJO - Twin Outlet

| Ø    | Silver  | Alu          |
|------|---------|--------------|
| 10.1 | BH 1204 | BH 1217 blue |



## BULKHEAD FIXED CONCAVE SEAT MALE

| Ø             | Silver  |
|---------------|---------|
| 10x1          | BH 4057 |
| 10x1.25       | BH 4058 |
| 3/8" x 24 unf | BH 4059 |



## FIXED CONCAVE SEAT MALE

| Ø             | Silver  |
|---------------|---------|
| 10x1          | BH 1472 |
| 10x1.25       | BH 1473 |
| 3/8" x 24 unf | BH 3971 |



## FIXED CONCAVE SEAT FEMALE (clip fixing)

| Ø             | Silver  |
|---------------|---------|
| 10 x 1        | BH 343  |
| 10 x 1.25     | BH 4061 |
| 3/8" x 24 unf | BH 410  |



## FIXED CONCAVE SEAT FEMALE

| Ø         | Silver  |
|-----------|---------|
| 10 x 1    | BH 1454 |
| 10 x 1.25 | BH 4060 |



## FIXED CONVEX SEAT FEMALE

| Ø         | Silver  |
|-----------|---------|
| 10 x 1    | BH 4314 |
| 10 x 1.25 | BH 4316 |



## FIXED CONVEX SEAT FEMALE (clip fixing) - 90°

| Ø      | Silver  |
|--------|---------|
| 10 x 1 | BH 4064 |



## SWIVEL MALE - STRAIGHT

| Ø         | Silver  | Alu          |
|-----------|---------|--------------|
| 10 x 1    | BH 1200 | BH 1313 blue |
| 10 x 1.25 | BH 1196 | BH 1316 blue |



## SWIVEL MALE - 45°

| Ø         | Silver  | Alu          |
|-----------|---------|--------------|
| 10 x 1    | BH 1201 | BH 1314 blue |
| 10 x 1.25 | BH 1197 | BH 1317 blue |



## SWIVEL MALE - 90°

| Ø         | Silver  | Alu          |
|-----------|---------|--------------|
| 10 x 1    | BH 1202 | BH 1315 blue |
| 10 x 1.25 | BH 1198 | BH 1318 blue |



## SWIVEL FEMALE - STRAIGHT

| Ø             | Silver  | Alu          |
|---------------|---------|--------------|
| 1/8" gas      | BH 318  |              |
| 3/8" x 24 unf | BH 1370 | BH 1330 blue |



## SWIVEL FEMALE - 45°

| Ø             | Silver  | Alu          |
|---------------|---------|--------------|
| 1/8" gas      | BH 319  |              |
| 3/8" x 24 unf | BH 1371 | BH 1331 blue |



## SWIVEL FEMALE - 90°

| Ø             | Silver  | Alu          |
|---------------|---------|--------------|
| 1/8" gas      | BH 320  |              |
| 3/8" x 24 unf | BH 1372 | BH 1332 blue |



## BULKHEAD MALE

| Ø             | Silver |
|---------------|--------|
| 3/8" x 24 unf | BH 302 |



## NUT FOR BULKHEAD

| Ø             | Silver |
|---------------|--------|
| 3/8" x 24 unf | BH 307 |





## FEMALE - FEMALE ADAPTOR

| Ø      | Silver  |
|--------|---------|
| 10 x 1 | BH 1474 |



## MALE - MALE ADAPTOR

| Ø                         | Silver | Alu         |
|---------------------------|--------|-------------|
| 3/8" x 24 unf - 1/8" gas  | BH 605 |             |
| 7/16" x 20 unf - 1/8" NPT |        | BH 699 blue |



## MALE - MALE ADAPTOR

| Ø                    | Silver |
|----------------------|--------|
| 10 x 1 - 1/8" gas    | BH 470 |
| 10 x 1.25 - 1/8" gas | BH 467 |



## MALE-MALE ADAPTOR

| Ø                        | Silver  |
|--------------------------|---------|
| 3/8" x 24 unf - 1/8" NPT | BH 5720 |



## MALE - FEMALE ADAPTOR

| Ø                      | Silver |
|------------------------|--------|
| 3/8" x 24 unf - 10 x 1 | BH 641 |



## MALE - FEMALE ADAPTOR

| Ø                        | Silver  |
|--------------------------|---------|
| 1/8" gas - 10 x 1        | BH 634  |
| 1/8" gas - 10 x 1.25     | BH 637  |
| 1/8" gas - 3/8" x 24 unf | BH 616  |
| 12 x 1 - 10 x 1          | BH 1488 |



## BANJO ADAPTOR FEMALE - Straight

| Ø      | Silver |
|--------|--------|
| 10 x 1 | BH 359 |



## BANJO ADAPTOR FEMALE - 25°

| Ø      | Silver |
|--------|--------|
| 10 x 1 | BH 516 |



## BANJO MALE ADAPTOR

| Ø                  | Silver |
|--------------------|--------|
| 10.1-3/8" x 24 unf | BH 951 |



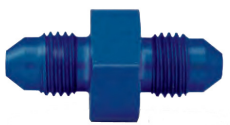
## TO MALE FOR RUBBER HOSE

| Ø         | Alu         |
|-----------|-------------|
| 7/16 x 20 | BH 194 blue |



## NIPPLE - Male

| Ø             | Alu         |
|---------------|-------------|
| 3/8" x 24 unf | BH 706 blue |



## NIPPLE - Male

| Ø        | Silver |
|----------|--------|
| 1/8" gas | BH 660 |



## TEE - Male

| Ø             | Alu         |
|---------------|-------------|
| 3/8" x 24 unf | BH 695 blue |



## TEE - Harley Davidson

| Silver  | Black   |
|---------|---------|
| BH 5285 | BH 5433 |



## 3-WAY CONNECTOR

| Silver  | Alu          |
|---------|--------------|
| BH 4301 | BH 1199 blue |



## 90° ELBOW

| Alu          |
|--------------|
| BH 1174 blue |



## NUT

| Silver | Alu         |
|--------|-------------|
| BH 281 | BH 282 gold |



## OLIVE

| Silver |
|--------|
| BH 288 |



## BANJO BOLT - Single

| Ø              | Silver  | Alu         | Black   |
|----------------|---------|-------------|---------|
| 8              | BH 426  |             |         |
| 10 x 1         | BH 427  | BH 441 gold | BH 5522 |
| 10 x 1.25      | BH 413  | BH 462 gold | BH 5523 |
| 12 x 1         | BH 4041 |             |         |
| 3/8" x 24 unf  | BH 414  | BH 471 gold | BH 5524 |
| 1/8" gas       | BH 425  |             |         |
| 7/16" x 24 unf | BH 1348 |             |         |



## BANJO BOLT WITH STOP SWITCH - Single

| Ø              | Silver   |
|----------------|----------|
| 10 x 1         | BH 4501C |
| 10 x 1.25      | BH 4502C |
| 3/8" x 24 unf  | BH 5269C |
| 7/16" x 24 unf | BH 5280C |



## BANJO BOLT - Double

| Ø             | Silver | Alu         | Black   |
|---------------|--------|-------------|---------|
| 10 x 1        | BH 435 | BH 443 gold | BH 5526 |
| 10 x 1.25     | BH 335 | BH 496 gold | BH 5527 |
| 3/8" x 24 unf | BH 379 | BH 327 gold | BH 5528 |



## BANJO BOLT WITH STOP SWITCH - Double

| Ø         | Silver   |
|-----------|----------|
| 10 x 1    | BH 4503C |
| 10 x 1.25 | BH 4504C |



## MILLED BANJO BOLT - Single

| Ø         | Silver  | Alu         |
|-----------|---------|-------------|
| 6 x 1     | BH 5014 |             |
| 8 x 1     |         | BH 4128 red |
| 10 x 1    | BH 7533 | BH 4019 red |
| 10 x 1.25 | BH 2393 | BH 4020 red |



## MILLED BANJO BOLT - Double

| Ø         | Silver  |
|-----------|---------|
| 10 x 1    | BH 2362 |
| 10 x 1.25 | BH 2363 |



## MILLED BANJO BOLT FOR BLEED - Single

| Ø         | Silver   | Alu           |
|-----------|----------|---------------|
| 6 x 1     | BH 5019  |               |
| 10 x 1    | BH 2373C | BH 2371C gold |
| 10 x 1.25 | BH 2392C | BH 2914C gold |



## MILLED BANJO BOLT FOR BLEED - Double

| Ø         | Silver   | Alu           |
|-----------|----------|---------------|
| 10 x 1    | BH 2364C | BH 2368C gold |
| 10 x 1.25 | BH 2365C | BH 2369C gold |





# ACCESSORIES

## RESERVOIR FLUID HOSE

| ∅          |         |
|------------|---------|
| 7 x 12     | BH 2120 |
| 6.5 x 10.5 | BH 6505 |



## FLUID HOSE CLIP

| ∅          |         |
|------------|---------|
| 7 x 12     | BH 2519 |
| 6.5 x 10.5 | BH 4285 |



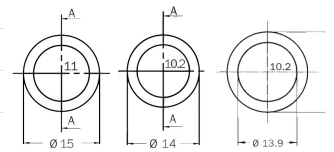
## CONVEX / CONCAVE ADAPTOR

|       |
|-------|
| BH 65 |
|-------|



## WASHER

| ∅               | Alu    | Copper  |
|-----------------|--------|---------|
| 11 x 15 x 1.5   | BH 419 |         |
| 10.2 x 14 x 1.5 | BH 420 |         |
| 10.2 x 13.9 x 1 |        | BH 4400 |



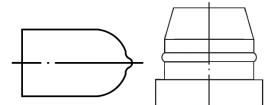
## BLEED NIPPLE

| ∅      |          |
|--------|----------|
| 6 x 1  | BH 2360C |
| 10 x 1 | BH 4729C |



## BLEED NIPPLE CAP

|         |         |
|---------|---------|
| Plastic | BH 3697 |
| Rubber  | BH 4267 |



BH 3697

BH 4267

## OIL TEMP SENSOR

| ∅      |         |
|--------|---------|
| 10 x 1 | BH 4339 |



## VALVE CAP

| Alu     |
|---------|
| BH 2470 |



## RIGID BLACK SHEATHING

|         |
|---------|
| BH 1959 |
|---------|



## TRANSPARENT HEAT SHRINKABLE TUBING

|         |
|---------|
| BH 1960 |
|---------|



## SEMI-RIGID WHITE SHEATHING

|         |
|---------|
| BH 1961 |
|---------|



## SPIRAL PVC HOSE COVER

|         |
|---------|
| BH 1936 |
|---------|



## HEAT SHRINK SLEEVE

BH 6692



BH 6054

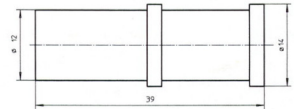


## SLEEVES

86 mm BH 98

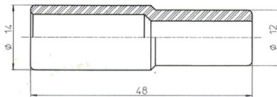


39 x 12 BH 109

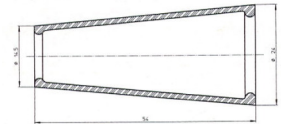


## COVERS

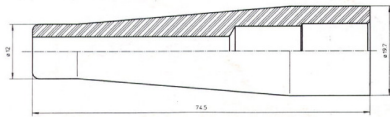
48 mm BH 83



54 mm BH 100



74.5 mm BH 2970



42 mm BH 102

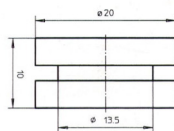


Banjo cover  
BH B21030

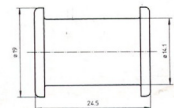


## GROMMETS

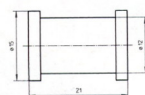
20 x 10 BH 161



24.5 x 14.1 BH 182

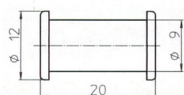


21 mm BH 206



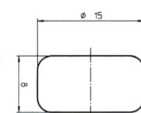
## RUBBER

9 X 20 BH 74



## BUSH

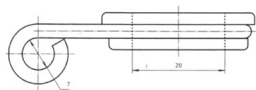
8 X 15 BH 97



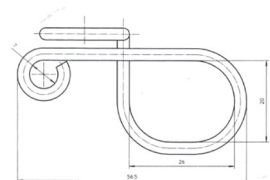


## CABLE GUIDE

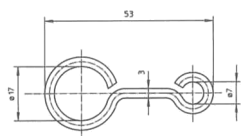
|                    |         |
|--------------------|---------|
| 6 mm               | BH 2514 |
| Rubber<br>for 2514 | BH 6146 |



|      |         |
|------|---------|
| 6 mm | BH 3998 |
|------|---------|

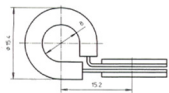


|  |         |
|--|---------|
|  | BH 4450 |
|--|---------|



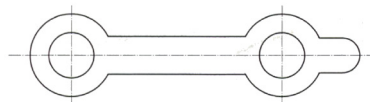
## HOSE CLAMP

|  |       |
|--|-------|
|  | BH 85 |
|--|-------|



## BANJO PLUG

|  |         |
|--|---------|
|  | BH 4018 |
|--|---------|



## EPDM O RING 6 x 1

|  |         |
|--|---------|
|  | BH 4826 |
|--|---------|





Email: [sales@eurobike.co.nz](mailto:sales@eurobike.co.nz) | Phone: 06-7586798